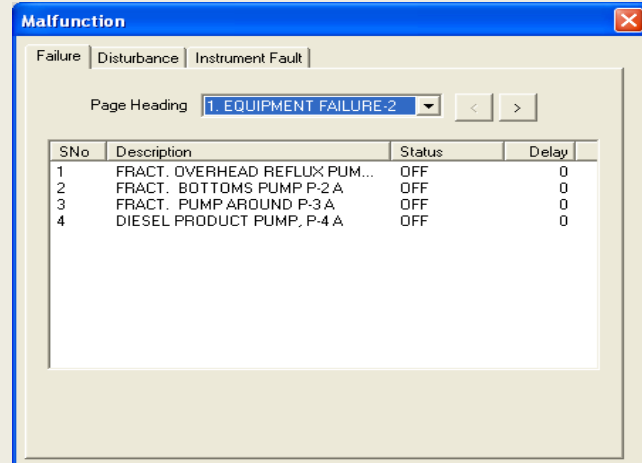
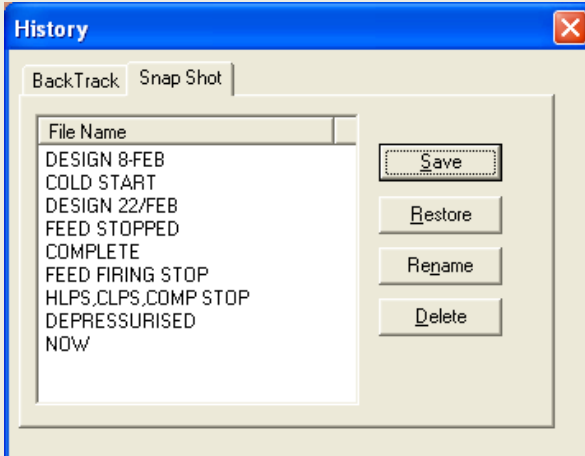
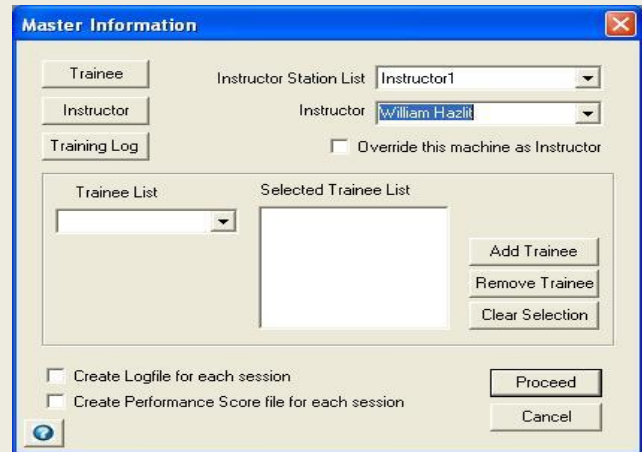
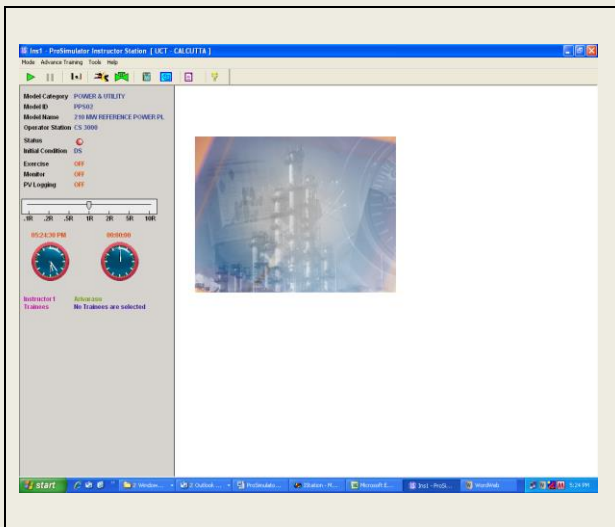


ProSimulator Instructor station enables the instructor to control and direct the training sessions. From the Instructor station, multiple independent training sessions can be invoked by the Instructor and each training sessions can be assigned to work with one or more operator stations.

Using this software the Instructor can load a model, invoke malfunctions and monitor the performance of the trainee. Instructor Station enables the Instructor to control and direct the training sessions .To improve the ease of Instructor actions, a graphical user interface with multiple windows, scroll windows, pull down menus, icons, 3D push buttons and dialog boxes is provided. All the actions can be enabled using a mouse pointer. Thus an experienced Instructor can work efficiently and a novice Instructor can learn fast. The key features of the Instructor station are:

- Login
  - Multiple training sessions
  - Instructor, Trainee database
  - Session log file Information
- Mode
  - Start-up mode
  - Snapshot/Backtrack
  - Simulation Speed
  - Run/Hold
- Malfunction
  - Failures
  - Disturbances
  - Instrument faults
- Field Devices
  - Block Valves
  - Globe Valves
- Advanced Training
  - Exercise
  - Monitor
  - Performance Scoring
- Reports
  - PV Logging
  - Event Logging
  - Alarm Logging
  - Tag Summary

- Summary Report
- Message to operator
- Instructor comments logging
- View session log file
- Instructor Graphics
- Administrator
  - Model View for model developer
  - Trainee / Instructor database
  - View Historical session log files
  - Network management



**Malfunction**

Failure | Disturbance | Instrument Fault

Page Heading: 1. UTILITIES AND BL

SNo	Description	Eng.Unit	Cur.Val	Ramp	Delay
1	AMBIENT AIR TEMP	DEGC	35.00	0	0
2	COOLING WATER TEMP	DEGC	33.00	0	0
3	MP				0
4	FUJ				0
5	BH				0
6	MA				0

**BH FEED TEMP**

Value:  OK

Delay (in Secs):  Cancel

Ramp:

Min: 40.00 Max: 150.00

**Malfunction**

Failure | Disturbance | Instrument Fault

Tag Name: FC101

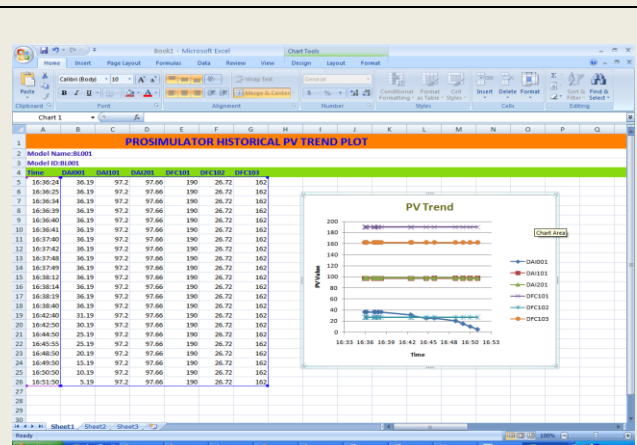
PV  MV

Add Delete

Tag	Description	Type	Overridden V...	Model Value
FC101	BH VGO CD FEED	PV	180.83	180.83
FC103	P-1A MIN BYPASS	PV	185.51	185.51
FC401	HHPs LIQ PRT	PV	75.16	75.16
PI401	HLPs PR	PV	35.38	35.38

**Tag Summary**

Tag	Desc	Unit	PV	Design Value	Deviation
LC101	ABSORBER BOTTOM	%	49.63	50.00	-0.73
LC102	ABS WASH WATER	%	50.02	50.00	0.05
LC103	FLASH DRUM	%	49.72	49.70	0.03
LC104	REFLUX DRUM	%	49.87	49.90	-0.07
FC102	CONDENSATE FLOW	M3 / HR	1.28	1.28	-0.21
FC103	LEAN SOLVANT FLOW	M3 / HR	531.16	531.40	-0.05
FC105	REFUX DRUM FLOW	M3 / HR	14.60	14.60	0.01
PI101	K.O DRUM PRESSURE	KG/CM2	25.70	25.70	0.01
TI101	STRIPPER BOTTOM	DEG C	120.97	121.00	-0.02
LI102	K.O DRUM	%	49.33	49.30	0.06
FI103	QUENCH CIRCULATION	M3 / HR	10.28	10.28	0.03
FI104	KOD WATER DRAIN	M3 / HR	0.00	0.00	0.00
FI107	KOD GAS TO FLARE	TPH	0.00	0.00	0.00
FI108	E-03 BYPASS	M3 / HR	56.80	56.80	-0.00
FI110	FLOW THRU P-03B	M3 / HR	162.51	162.50	0.01
FI111	RICH AMINE THRU TUR...	M3 / HR	636.67	636.70	-0.00
FI112	P-03S FLOW	M3 / HR	0.00	0.00	0.00
FI114	FLASH DRUM TO STRIP...	M3 / HR	637.77	637.70	0.01
FI116	STEAM FLOW	TPH	8.28	8.28	0.04
FI118	CO2 TO FLARE	TPH	18.60	18.60	0.02
FI119	CO2 TO B/L	TPH	45.79	45.77	0.05



**Performance Monitor - Editor**

No	Tag Name	Description	PV Low	PV High	Low	High
1	BPS103	R G MKUPH2 BYPA	0.00	1.00	0.50	0.90
2	BPS201	F-1 FG PR LO	0.00	1.00	0.50	0.90

Monitoring Variables

Tag Name:  Low:  High:

Description:  Pv Low:  Pv High:

Add Delete Ok Cancel

**Performance Scoring - Notepad**

```

.....
Session ID : TAMU032009S_161005
Instructor ID : TAMU
Trainee Names : No Trainees are selected in this session
Session Date/Time : 03/20/2009 16:10:05
Model ID : DT001
Model Name : DISTILLATION COLUMN
.....
Tag Name    HL    PL    LL    Weightage    STATUS
.....
DTCL01    100.0000    0.0000    60.0000    25.00    FAIL
DTCL01    100.0000    171.6311    60.0000    25.00    FAIL
DTCL01    11.0000    11.1540    10.0000    50.00    PAFS
.....
Result = 50.00
    
```